

Phone: (076) 283-7132 Fax: (076) 283-4242
Ni-81 Unoke, Kahoku, Ishikawa 929-1195
Email: chiiki@city.kahoku.lg.jp
<https://www.city.kahoku.lg.jp/>



Phone: (076) 204-6822 Fax: (076) 282-5663
Ku-42-1 Takamatsu, Kahoku, Ishikawa 929-1215
<https://kanko-kahoku.com/>



 **Kahoku Specialty Brands**
<https://www.city.kahoku.lg.jp/tokusanhinbrand/index.html>



 **Kahoku Official Instagram Account**
@kahokucity



The Japanese version of this pamphlet is also available to read on your smartphone or computer. No special app required!

Ishikawa Ebooks: <https://www.ishikawa-ebooks.jp/>

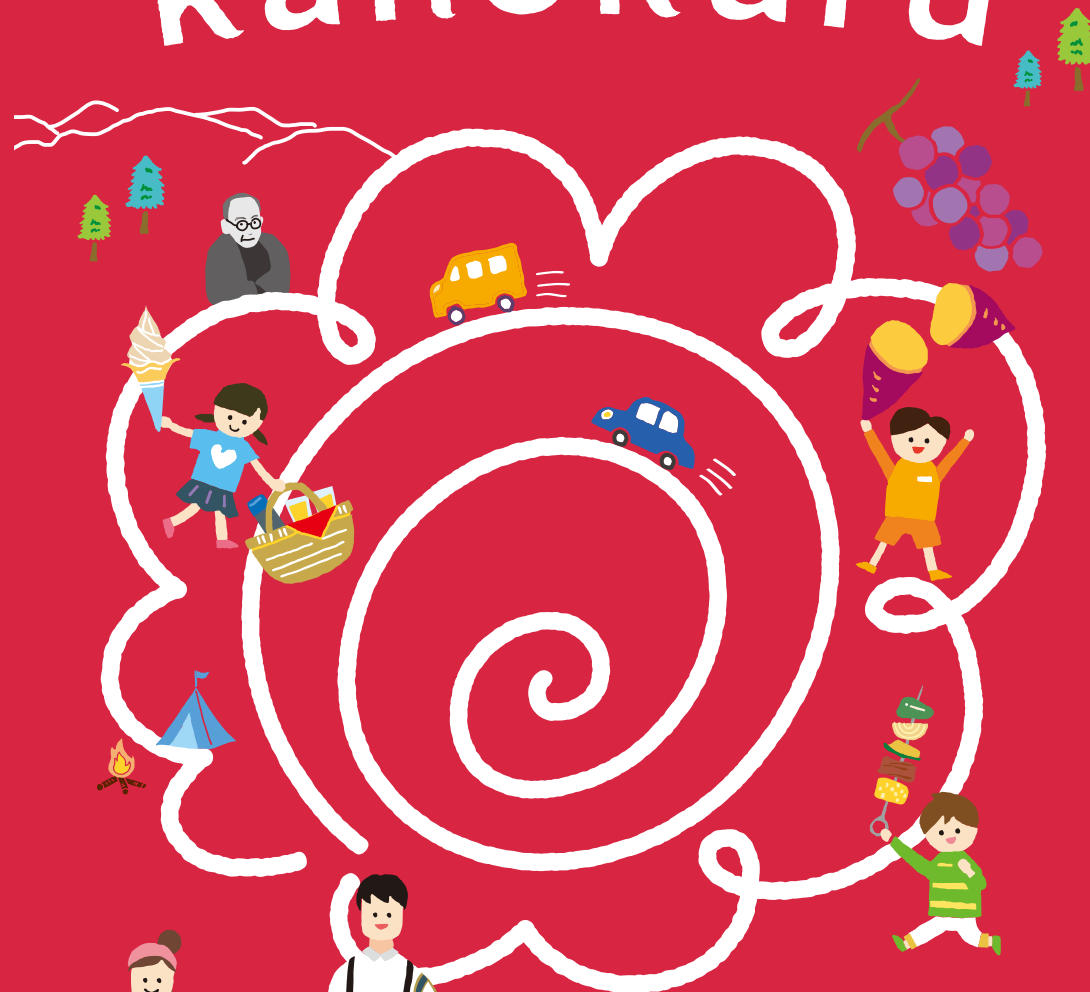


Kahoku, Ishikawa Tourism Pamphlet
Kahokuru revision 6, June 2024
It is subject to change without notice.

Heading to Kahoku, "R U"?



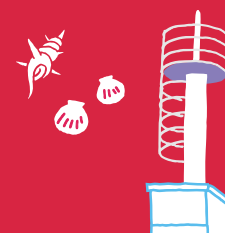
kahokuru



Fun in Kahoku!

Fun with the Family!

All Around Town!



Have a Great Time in Kahoku
with the Whole Family!



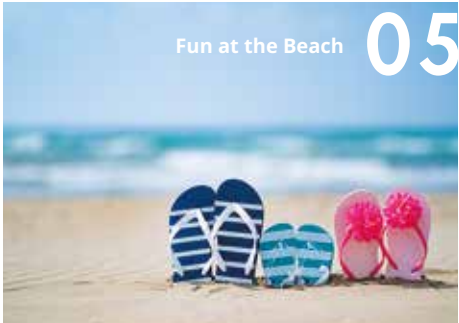
Where are there playgrounds for kids to play around?
Is there anywhere to just have a nice day as a family?
Kahoku aims to offer great answers to these questions
and more, as part of its goal of becoming the best
place in Japan to raise children.



Time for Learning 03



Day Trips and Outings 07



Fun at the Beach 05



Picnic Day 09



Go for a Drive 11

- Kahoku Specialty Brands P13
- Festivals through All Four Seasons P15
- More Kahoku Highlights P17
- Kahoku Day Trip Ideas P19
- Map of Kahoku P21



The Garden of Stairs and Path of Contemplation are both great for a stroll



Magical lighting in the evenings, from sunset to 21:30



Have a break at Café Teoria

Ishikawa Nishida Kitaro Museum of Philosophy

Extra Benefit

Designed by the world-famous architect Tadao Ando. Visitors can learn about Nishida's philosophical teachings, and take a contemplative walk around the Grove of Philosophy outside the museum.

☎ (076) 283-6600 📍 1 Uchihisumii Map: D-2

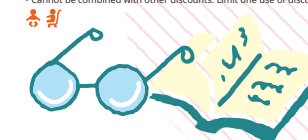
🕒 9:00 to 17:00 (last entry at 16:30)

🗓 Mon. (or following weekday if a holiday) and new year holidays

¥ Adults ¥300 (¥250 each for groups of 20 or more), adults 65 and up ¥200, free for kids under 18 and disability certificate holders

Show this pamphlet for ¥50 off per person for your whole group!

* Valid until October 31, 2025.
* Cannot be combined with other discounts. Limit one use of discount.



Exhibition Room 1



Observation Lounge

the Hometown of One of Japan's Top Philosophers!

Learn New Things through New Experiences!

Expand Your Horizons through Experiences in

Sea and Beach Museum

Extra Benefit

This ship-shaped museum includes a recreation of an old fishing village, displays showing fishing equipment and items from the area, and even a place to try rowing with a single oar, known as sculling.

☎ (076) 283-8880 📍 Mu-1-3 Shiroo Map: D-1

🕒 9:00 to 17:00 (last entry at 16:30)

🗓 Mon. (or following weekday if a holiday) and new year holidays

¥ Adults ¥200 (¥150 each for groups of 20 or more), kids under 18 ¥100 (¥50 each for groups of 20 or more), free for preschoolers

Show this pamphlet for ¥50 off per person, for your whole group!

* Valid until October 31, 2025.
* Cannot be combined with other discounts. Limit one use of discount.



Find out about Kahoku's history and historic figures!

Kahoku Local History Exhibition Hall



Ceramics



ShuCODE

Uminosora Studio & Gallery

One-day workshops are available (reservations required), shaping clay either with an electric pottery wheel or by hand.

☎ (076) 282-5913 Map: A-4

📍 Na-11-3 Futatsuya

🕒 Workshops start twice a day, at 12:00 and 14:00

🗓 Mon. & Tue.

¥ ¥4,400 (incl. tax) per person (additional options for size, colors, etc.)



YRT

ShuCODE is a new style of product that embodies Kahoku's history as a town of thread makers.

☎ (076) 285-1985

📍 Ha-1-17 Tozuka Map: C-2

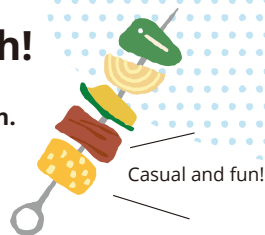
🕒 By reservation only

¥ Instructor fee
¥2,000/hour
(plus material fees
of ¥500-1,500 per item)



The Perfect Place for Fun at the Beach!

The western edge of town runs along the magnificent Sea of Japan.
The shallow beaches are a great place for fun in the water!



Hungry for Fun? Grill Up Good Times!

Umikko Land Nanatsuka has a grilling area with free griddles to borrow, as well as charcoal and wire mesh grills available for sale.



The rooftop offers nice shade on sunny days, and means the grilling doesn't have to stop even if it rains!

Spend the Night Out Camping!

The campground also has spaces for sleeping in cars and trailers, for more ways to enjoy it.

Umikko Land Nanatsuka

This outdoor leisure destination is by the Sea and Beach Museum, just off Shiroo IC on the Noto Satoyama Kaido expressway.

☎ (076) 283-8880

📍 Mu-1-3 Shiroo Map: D-1

📅 Mon. (or following weekday if a holiday)

💰 Varies by amount of time & people; contact for details

📅 Mid Apr. to end of Oct.



Fish for Japanese Whiting in an Anglers' Paradise!

Kahoku's long, sandy beaches are great for fishing for Japanese whiting, which are, of course, delicious!

Takamatsu Coast & Shiroo Coast

📍 Takamatsu to Shiroo
🚗 🚶



Outdoor Fun

Don't Miss the View from the Old Shiroo Lighthouse!

The lighthouse's surroundings are now a park, offering a great place to watch sunsets over the Sea of Japan.

Old Shiroo Lighthouse & Onigayama Park

📍 1-2-5 Shiroo Map: D-2
🚗 🚶



Savor the Sand and Surf to the Fullest!

Kahoku's beautiful beaches are popular destinations for families to enjoy the fine white sand and the waves.





Nanatsuka Central Park

Enjoy large-scale play equipment inspired by the idea of an undersea city, and an 83-meter roller slide — the longest in Ishikawa! There's something here for kids of all ages.

☎ (076) 285-2191
(Management Center)
📍 Ni-17-1 Tozuka Map: C-2
🚗 🚶 🚲



Fun Ways to Get Plenty of Exercise!



Takamatsu Sports Park

The big grassy lawn is great for picnic lunches, playing ball games, or even just running around! There's also a covered rest area.

☎ (076) 282-5479
📍 (Takamatsu Sports Center)
O-61 Uchitakamatsu Map: B-4
🚗 Indoor facilities closed Tue.
(or following weekday if a holiday)
and new year holidays
(Park itself open 24 hours a day,
7 days a week)
¥ Rental fees vary by facility
(for indoor facilities)
🚗 🚶 🚲

Make lasting memories with a trip to a park with an impressive playground, or with an outing to pick fresh seasonal fruit.



Fun and excitement even on rainy days!

Asobi no Mori Kahokkuru

A must-visit educational play destination for families! Indoor and outdoor play structures offer safe and fun places for children of all ages to have fun with exercise, reading, and more.

☎ (076) 208-3517
📍 Wa-108 Tani Map: C-4
🕒 9:00 to 17:00
🚗 Maintenance days (usually 1 day/month)
and new year holidays
¥ Ages 1-11 ¥400 (¥300 each for groups of 20 or more),
ages 12 and up ¥300
(Free admission for Kahoku residents)
WEB <https://www.k-kuru.com>
🚗 🚶 🚲



Pick Your Own Sweet and Delicious Seasonal Fruit!

Look for the Moai!



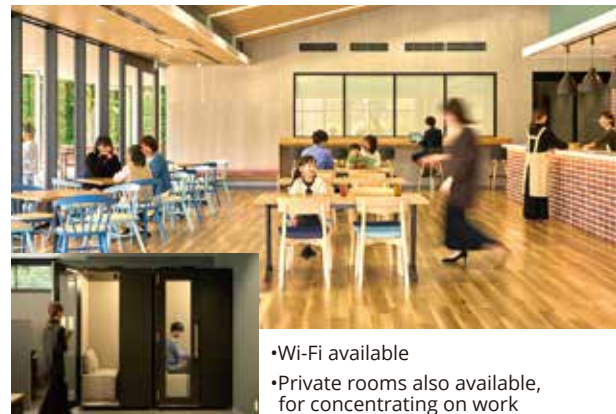
Moai Farm

☎ (076) 283-5524
📍 286 Kohoku Map: E-2
🕒 9:00 to 17:00
🚗 Open 7 days a week during season
📅 Early Jul. to late Aug.
¥ Small grape picking season (early Jul. to early Aug.):
Adults ¥1,700, kids 6-11 ¥1,300, kids 2-5 ¥1,000,
free for kids under 2
Large grape picking season (early to late Aug.):
Adults ¥2,000, kids 6-11 ¥1,500, kids 2-5 ¥1,200,
free for kids under 2
(Discounts available for groups, as well as for
Aeon cardholders and JAF members)



Opened in April 2024!

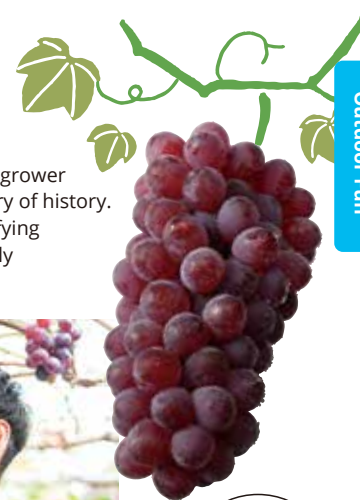
Located next to Asobi no Mori Kahokkuru. This facility features coworking and free spaces (reservations required), as well as a spacious café serving delicious lunches and parfaits.



•Wi-Fi available
•Private rooms also available,
for concentrating on work

Grape Picking

Kahoku is Ishikawa's largest grower of grapes, with over a century of history. Savor the town's large, satisfying Takamatsu Grapes, for a truly luxurious treat!



Which grape looks tastiest?



Don't miss the seasonal parfaits, made with fresh fruit!

Tsudoi no Mori Kahokkuru+

☎ (076) 208-3517
📍 Wa-108 Tani Map: C-4
🕒 9:00 to 17:00
🚗 Maintenance days (usually 1 day/month) and new year holidays
¥ Coworking Space:
¥200/hour, or ¥1,000/day
Free Space (Per Hour):
¥400 for individuals, or
¥1,000 for groups
(minimum 3 hours for groups)
WEB <https://k-kuru.com/plus/>
🚗 🚶 🚲



Picnic Day! Have a Great Time at the Park!

Run around on a wide-open grass lawn, or relax with a snack. There are all sorts of great ways to enjoy picnic time with the whole family here in Kahoku!



Get out there and play!



Unoko Park

Full of variety, with lush greenery and sports fields, including a youth baseball diamond. There's also a playground with plenty to climb on!

- ☎ (076) 283-4505 (Unoko Sports Center)
- 📍 Ushi-39-1 Shimoyamada (Map: D-3)
- 🕒 Mon. (or following weekday if a holiday) and new year holidays (Park open 24 hours a day, 7 days a week)
- ¥ Rental fees vary by facility (for indoor facilities)



You might even find rhinoceros beetles in summer!

Have a relaxed chat on the lawn!



Shiseigaoka Children's Center

A children's center located by Unoko Park. The playroom features a trampoline and a slide, and plenty of indoor toys, making it great for rainy days too.

- ☎ (076) 283-3889
- 📍 Tora-4 Shimoyamada (Map: D-3)
- 🕒 13:00 to 17:00 Wed. to Fri., and 9:00 to 17:00 Sat. & Sun. Mon., Tue., national holidays, and new year holidays

Balls, flying discs, and more available to borrow!



Omi-Nishiyama Yayoi no Sato Park

This park serves as a way to preserve the Omi-Nishiyama Ruins (a Prefectural Historic Site), which date back to the Yayoi period, 1,700-2,300 years ago.

- ☎ (076) 283-7135 (Kahoku City Hall Sports and Culture Division)
- 📍 In Seto-machi (Map: B-5)

A lovely view of the sea to enjoy!



Delicious Destinations for the Whole Family Kahoku Dining Highlights



Fresh pizza made by hand

Pizza Carry

- ☎ (076) 208-5380 📍 Wo-11-2-2 Takamatsu (Map: A-4)
- 🕒 11:00 to 20:15 🗓 Tue.
- 🌐 <https://www.pizza-carry.com/shop-campaign/takamatsu>



Choice Kuroge Wagyu sirloin & lean steak set

Nanatsuka Shokusai

- ☎ (076) 204-7152 📍 He-9-3 Kizu (Map: C-3)
- 🕒 9:30 to 16:00 Wed. to Fri., and 9:30 to 19:30 Sat. & Sun. (last order at 19:00)
- 🗓 Mon., Tue., and national holidays
- 📱 @nanatsuka_syokusai



Over 30 different items available each day



Bakery Cobitto

- ☎ (076) 204-7812 📍 I-73-13 Kizu (Map: C-3)
- 🕒 8:00 to 18:00 (or until sold out) Wed. & Thu.
- 📱 @bakery_cobitto



Waffle topped with seasonal fruit, served with Dimbula black tea

Hasu Tea

- ☎ (076) 254-1660 📍 Ha-27-14 Hamakita (Map: C-2)
- 🕒 10:00 to 18:00 🗓 Wed. (and occasionally other days)
- 🌐 <https://www.hasu-tea.com>
- 📱 @hasu.tea.srilanka.tea



Choose from 30-40 kinds of sake

Kijitora

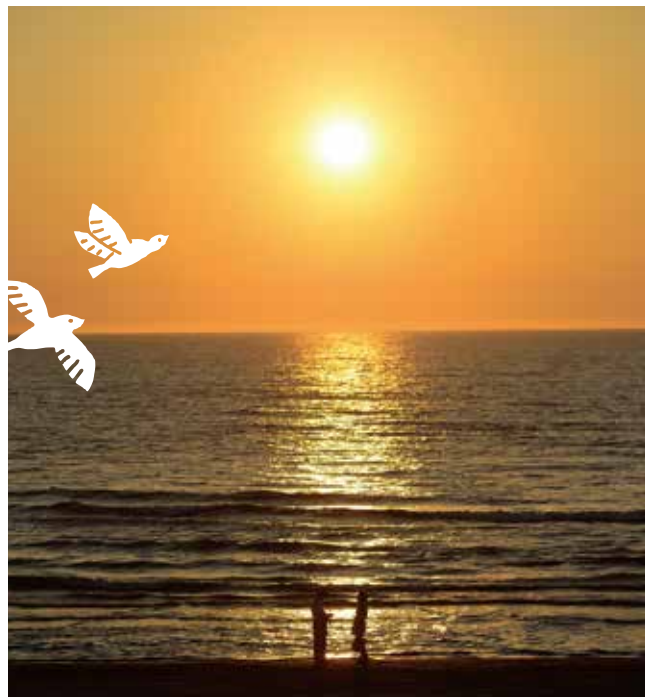
- ☎ (050) 8883-4430 📍 I-6-15 Akihamu (Map: C-2)
- 🕒 18:00 to 23:00 Wed. to Sat., and 15:00 to 22:00 Sun. (can open as early as 12:00 by reservation)
- 🗓 Mon. & Tue.
- 📱 @kijitora_wasyu



The five businesses shown here were all opened through the Kahoku City Subsidy for Business Utilization of Vacant Houses and Shops.

Grab Some of Kahoku's Finest at the Roadside Station!

Michi no Eki Takamatsu is a roadside station on the Noto Satoyama Kaido expressway, which runs between Kanazawa and Noto. See beautiful sunsets, and shop for some of the best that Kahoku has to offer!



Gorgeous scenes of the sun setting into the Sea of Japan



Choose from a selection of local products and fresh local vegetables at Satoyama-kan



Michi no Eki Takamatsu (Satoyama-kan & Satoumi-kan)

☎ (076) 281-2221

📍 Fu-16-3 Futatsuya Map: A-4

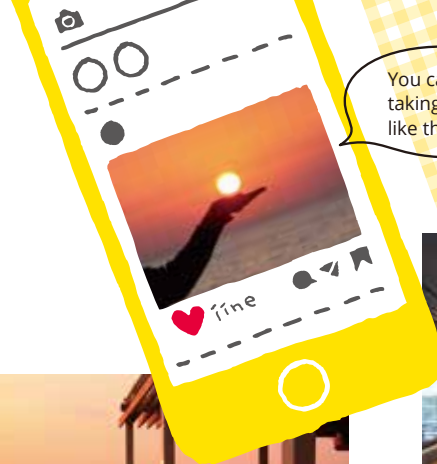
🕒 9:00 to 18:00

Accessible from the Noto Satoyama Kaido expressway via Takamatsu SA or Kenritsu Kangodai IC, as well as from ordinary roads.

🔌 1 EV quick charger available (at Satoyama-kan)



A Michi no Eki Takamatsu original! Coffee jelly floats, featuring coffee jelly made by hand with Satoyama-Satoumi Blend coffee.



You can even try taking photos like this!

The Newly Renovated Satoumi-kan!



Satoumi-kan features a café-style restaurant with a stunning view of the sea



- ① Matsuya Toriyasai Miso ramen
- ② Noto Pork sauce katsudon pork cutlet bowl
- ③ Curry ramen with Kahokugata Pork

Kuromitsu black sugar syrup goes great with sweet potato!



Kahokkuri Shakes are made with local Kahokkuri sweet potatoes, for a rich, mellow sweetness



Textile products like you'd expect from a town of thread-makers, at Satoyama-kan



Get a commemorative photo by the Grape House sculpture, inspired by Kahoku's local specialty Takamatsu Grapes, at Satoumi-kan



Pet-friendly outdoor terrace at Satoumi-kan

Dog park at Satoumi-kan (No composting toilets currently available)



Sweet and delicious!

**Kahokkuri
Sweet Potatoes**

(Mid Nov. to late Mar.)

Noah from ShuCODE**Keyrings**

YRT

Made with 100% Kahokkuri
Sweet Potato**Kahokkuri Kintsuba Sweets**

Nakata Kashiho

Fresh
and
Juicy**Osaki Daikon
Radishes**(Late Sep. to
late Oct.)Lovingly Prepared for
Great Flavor**Futakati
Choimochi Bag**

Futakuchi Seichu

**Herb Sausages Made
with Premium Tonki****Pork from Noto**

Familie

Crisp and Crunchy,
or Grated Smooth**Dentelle de Soleil
(Lace Glass Dishes)**

Taiyo Lace

Juicy Tonki Sausages**Sakyu Nagaimo Yams**

(Mid Nov. to end of Jan.)

**Kahoku
You're Sure**Whether it's delicious local foods
there's something here that**Souvenirs
to LIKE!**or beautiful textile products,
everyone will like!**Takamatsu Monpei
Persimmons**

(Late Oct. to late Nov.)

Enjoy Their
Secret Recipe
at Home!**Saburobei Secret Sauce**

Saburobei

Stewed Pork

Imaeda

Featuring a bright orange
filling of sweet beans and
Monpei persimmon!**Monpei-yaki**

Hakkouya

Kahoku no Kofuku Grape Liqueur

JA Green Kahoku

Liqueur with bits of
Takamatsu Grape**Kahokkuri-bo Sweet Potato Sticks**

Takamatsu Rest House

Nyantaro Wristbands

Kajitani Knit Kogyosho

Large, satisfying,
and delicious**Takamatsu Grapes**

(Late Jun. to mid Aug.)

Satoyama-kan at Michi no Eki Takamatsu has
a special section featuring these products.
(Some products shown may not be available.)Kahoku Specialty Brands are
produce or products certified
by the city as being produced
using excellent materials and
techniques, in Kahoku.**Premium Locally Grown Rice****(Milky Queen, Nikomaru, and Kahoku Komachi)**

Wakamidori Farming Cooperative

Toriyasai Miso

Matsuya

An all-purpose
seasoning
and soup
base beloved
in IshikawaA summertime
favorite!**Osaki Watermelons**

(Late Jun. to late Jul.)

Rich aroma with
a subtle sweetness!**Produce** Kahoku, Ishikawa Agricultural
Cooperative Sales Section**Desserts****Local Specialty
Products****Meat****Textile
Products****Craft
Products**



Unforgettable Moments with Exciting Festivals in Kahoku!

These events are a great time for kids and adults alike!
There's something to look forward to in every season, too.



Liveliness and fun all year round!

Festivals through All Four Seasons

Festivals in Kahoku are a way to celebrate the blessings of nature and to bring some fun into everyone's lives.



Cherry Blossom Festival (Early Apr.)

Enjoy stage performances like folk songs and plays, as well as food stalls, all surrounded by cherry blossoms in full bloom.



Cherry Blossom Festival



Summer Festa in Kahoku (Late Jul. or early Aug.)

Three events in one! The Beach Festa, River Festa, and Cat Festa are held in different parts of town, each with its own activities.



Summer Festa in Kahoku



Kanikani Gassen ("Crab War") Food Festival (Mid Nov.)

Enjoy autumn specialties from Kahoku, including dishes made with local crab.



Kanikani Gassen ("Crab War") Food Festival



Rice Porridge and Hot Pot Festival



Rice Porridge and Hot Pot Festival (Mid Jan. to mid Feb.)

Restaurants in Kahoku offer special rice porridge and hot pot dishes for winter.



More Kahoku Highlights

There's plenty of other things to see and experience in Kahoku, too!
Historic sites, parks full of beautiful flowers, outdoor activities, and more!



Kamo Shrine

This shrine's history in Kahoku dates back to some 1,200 years ago. The ceiling of the Norito-den litany hall is decorated with a work of Wajima Lacquerware featuring *chinkin* gold inlay, measuring roughly 2 m on each side. (Advance reservations required for tours.)

📍 Ri-119-1 Yokoyama Map: C-3 ☎ (076) 285-0365
🕒 9:00 to 16:00 🚶 🚲

History



History

Traditional Townscape of the Old Noto Kaido Road

Back in the Edo period (1603-1868), Kahoku flourished as a key post town between Kaga to the south and Noto to the north. Even now, some parts of town still look the same way they did back then.

📍 Takamatsu Map: B-3



Cherry Blossoms

Kamiyamada Kita Family Weeping Cherry Tree

This weeping cherry tree is over 120 years old, and is a city-designated Natural Monument.

📍 Ha-15 Kamiyamada Map: D-3



Cherry Blossoms

Kochidani Rindo Sakura Road

This forest road runs about 4 km to the top of Mt. Hodatsu, lined with cherry trees.

📍 Nodera Map: B-7



Cherry Blossoms

Nakamachi-dori Street

During the Cherry Blossom Festival, paper lanterns go up along this street to herald the coming of spring.

📍 Takamatsu Map: A-4



Play

Unoike Mizube Park

Enjoy a peaceful walk along the waterfront.

📍 Osaki Map: E-2 🚶 🚲



Play

Shiroo Shirayuri Park

In addition to a pleasant walking path, the park also features a playground and a sandbox for kids.

📍 Shiroo Map: D-2 🚶 🚲



Play

Gakuendai Park No. 1

A park with a great playground, and plenty of space for ball games.

📍 Gakuendai Map: A-4 🚶 🚲



Play

Takamatsu Traffic Park

Bikes and other vehicles for kids are available to borrow from 13:30 to 16:30.

📍 Takamatsu Map: B-4 🚶 🚲



Activities

Takamatsu Ground Golf Course

One of Japan's largest ground golf courses! Fun for all ages.

📍 Ma-1 Futatsuya Map: A-4
☎ (076) 281-3751
🗓 Dec. 29 to Jan. 3 🚶



Activities

Across Takamatsu

An all-weather sports center, including a swimming pool and baths.

📍 Ni-12 Uchitakamatsu Map: B-4
☎ (076) 281-8000
🗓 Tue., mid Aug., and new year holidays



Relaxation

Takamatsu Machikado Community Center

This event and gallery space also features a coffee shop, and sells local products.

📍 Tsu-56-1 Takamatsu Map: A-4
☎ (076) 282-5760
🗓 Tue., 1st & 3rd Mon. of each month, mid Aug., and new year holidays

Kahoku Day Trip Ideas

Want to make the most of a day trip to Kahoku? Here are some ideas for places to check out.

Learn, play, relax, and enjoy the pleasures Kahoku has to offer.

START!

1 Ishikawa Nishida Kitaro Museum of Philosophy

P03-04

Enjoy philosophy, or maybe just a treat



2 Umikko Land Nanatsuka & Sea and Beach Museum

P03-05

Learn about old ways of life? Or maybe grill up some food?



3 Old Shiroy Lighthouse & Onigayama Park

P06

What a view!



4 Nanatsuka Central Park

P07

Such a big playground!



Perfect for cherry blossom season

5 Unoke Park

P09



A center of local spirituality

6 Kamo Shrine

P17



Enjoy a little relaxation

7 Takamatsu Machikado Community Center

P18



8 Michi no Eki Takamatsu

P11-12



Unwind with a footbath, good food, and a sunset



ISHIKAWA KAHOKU CITY MAP

 Diaper Changing
Stations

 Parks

 Great Places
for Kids!

Kahoku
Toyama
Ishikawa
Fukui

Overnight Lodging

A Kahoku-tei
☎ (076) 281-0013
📍 Na-13 Takamatsu

B Yamaju
☎ (076) 283-3455
📍 Ha-20-1 Hamakita

C Kikunoya
☎ (076) 283-1678
📍 1-4-36 Sotohisumi

D Nagomi-tei
☎ (076) 283-5550
📍 Ri-207-6 Unoke

Access

● **By Air**
45 min. drive from Komatsu Airport, or 1 hr., 20 min. drive from Noto Airport

● **By Car**
Take the Hokuriku Expressway to Kanazawa-higashi IC and drive 20 min.,
or to Kanazawa-Morimoto IC and drive 15 min.

● **By JR**
25 min. from Kanazawa Station to Unoke Station
2 hr., 30 min. from Tokyo Station to Kanazawa Station
2 hr., 10 min. from Osaka Station to Kanazawa Station

Kahokudai Taxi
☎ (076) 283-0679

Unoke Taxi
☎ (076) 283-2161

Takamatsu Taxi
☎ (076) 281-0007

Kahoku Official YouTube Channel
See beautiful scenery from Kahoku through
all four seasons, 360° VR video of events,
and more!



Check it out!

